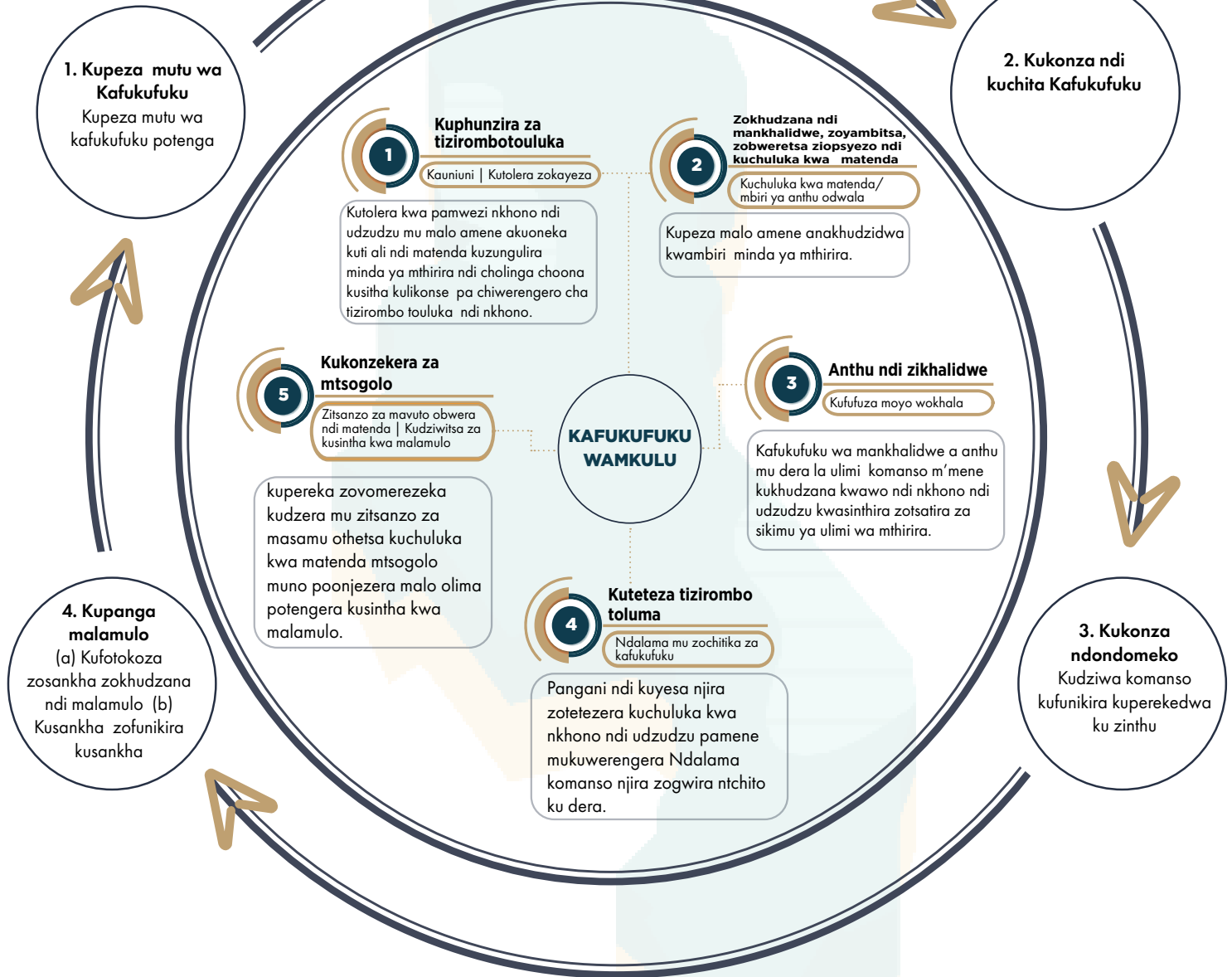


ZOKHUZANA NDI SHIRE-VEC:

Shire Valley Vector Control Project (Shire-Vec) ndi kafukufuku wogwirizana amene adzafufuza matenda obwera ndi tizirombo tolima (VBDs) mu malo a ulimi mu dziko la Malawi. Madera amene ali mu pulojekiti ya Shire Valley Transformative Project (SVTP) ndi amene ali opindula ku kafukufukuyu.

Kuchokera ku kafukufuku kapena ku zochitika za malamulo komanso kuchita kafukufuku(ndondomeko):



Partners

- Malawi-Liverpool-Wellcome Clinical Research Programme (MLW)
- MAC - Communicable Diseases Action Centre (MAC-CDAC)
- Kamuzu University of Health Sciences (KUHeS)
- African Institute for Development Policy (AFIDEP)
- Liverpool School of Tropical Medicine (LSTM)



Kuti mudziwe zambiri:

www.lstmd.ac.uk/shire-vec malawivector@gmail.com [@malawivector](https://twitter.com/malawivector)

FUNDED BY
NIHR | National Institute for Health and Care Research

Kafukufuku uyu watandizidwa ndi Ndalama zochokera ku National Institute for Health Research (NIHR) [NIHR Global Health Research Group poteteza matenda obwera ndi tizirombo tolima mu malo a ulimi mu Malawi (NIHR 133144)/NIHR Evaluation, Trials and Studies Coordinating Centre (NETSCC)].